



Instructions for BMW Go Pro Style Camera Mount

Parts Included-

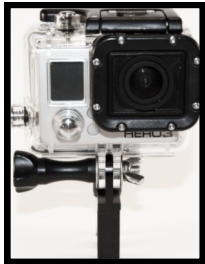
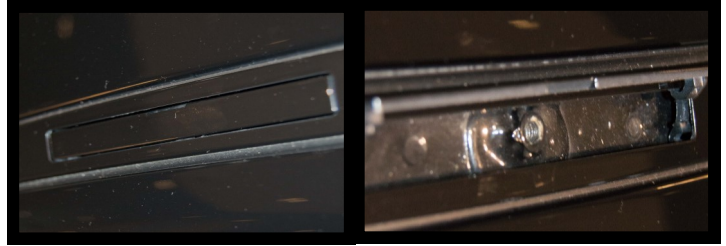
1-Camera Mount

1-M6 Bolt/M7 Bolt (5 Series Only)

2-Washers

1-Wing Nut

1) Locate roof rack mounting door and open door.



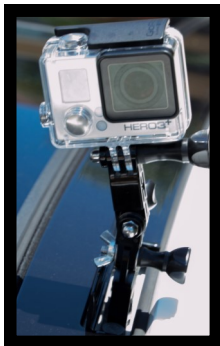
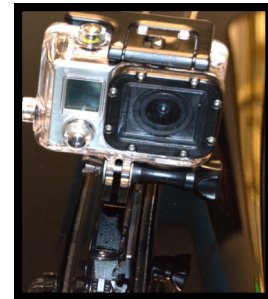
2) Insert Go Pro Housing and Bolt with one washer on each side and install wing nut. Do not snug tight yet

3) Install mount into roof rack mounting door tilt camera forward and start bolt by hand



4) Tighten bolt with Alan Wrench

5) Adjust camera to selected angle and tighten go pro bolt to lock in place. You are now ready to hit hit record and start taking video



For added angle adjustment add the two factory go pro arms to your speed mount.

Note-On 5 Series models you will need to cut the 2 plastic pieces going across the door

